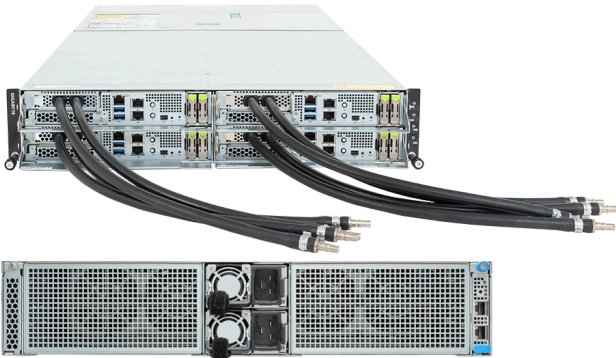


H253-Z10-LAP1 (Rev. 3.x)

High Density Server - AMD EPYC™ 9005/9004 -
2U 4-Node UP 8-Bay E1.S Gen4 NVMe DLC



Key Features

- Direct liquid cooling solution
- 2U 4-node front access server system
- Single AMD EPYC™ 9005/9004 Series Processors per node
- 12-Channel DDR5 RDIMM, 24 x DIMMs per node
- 8 x 1Gb/s LAN ports via Intel® I350-AM2
- 2 x CMC ports
- 8 x E1.S Gen4 NVMe hot-swap bays
- 12 x M.2 slots with PCIe Gen5 x4 and SATA interface
- 4 x OCP NIC 3.0 PCIe Gen5 x16 slots
- Dual 3000W 80 PLUS Titanium redundant power supply

Applications

High-Performance Computing Server, High Converged Server...

Specification

Dimensions	2U 4-Node - Front access (W447 x H87 x D887 mm)	PCIe Expansion Slots	4 x OCP NIC 3.0 PCIe Gen5 x16, Support NCSI
Motherboard	MZ13-SH0	I/O Ports	Front: 8 x USB 3.2 Gen1, 4 x Mini-DP, 8 x RJ45, 4 x MLAN Rear: 2 x CMC
CPU	AMD EPYC™ 9005 Series Processors AMD EPYC™ 9004 Series Processors Single processor per node, cTDP up to 500W	TPM	1 x TPM header (SPI), Optional TPM2.0 kit: CTM010
OS Compatibility	OS Support List	Power Supply	Dual 3000W 80 PLUS Titanium redundant power supply AC Input: 100-240V *The system power supply requires C19 power cord.
Socket	4 x LGA 6096 (Socket SP5)	System Fans	4 x 80x80x80mm
Chipset	System on Chip	Operating Properties	Operating: 10°C to 35°C, 8% to 80% (non-condensing) Non-operating: -40°C to 60°C, 20% to 95% (non-condensing) *To ensure system stability and prevent condensation, when the relative humidity exceeds 50%, the coolant inlet temperature must be higher than the dry-bulb temperature and it should not exceed 45°C.
Memory	12-Channel DDR5 RDIMM, 96 x DIMMs [EPYC 9005] Up to 5200 MT/s (1DPC), Up to 4400 MT/s (1R 2DPC), 4000 MT/s (2R 2DPC) [EPYC 9004] Up to 4800 MT/s (1DPC), 3600 MT/s (2DPC)	Packaging Content	1 x H253-Z10-LAP1 4 x GIGABYTE CPU cold plate loops 1 x Mini-DP to D-Sub cable 1 x L-shape Rail kit
LAN	8 x 1Gb/s LAN (4 x Intel® I350-AM2), Support NCSI 4 x 10/100/1000 Mbps Management LAN 2 x CMC ports	Ordering Part Numbers	6NH253Z10DR000LCP1*
Video	Integrated in ASPEED® AST2600 x 4 - 4 x Mini-DP	Optional Parts	- E1.S Latch with dummy tray (24 in 1): 6NH253Z10S1000AAP11
Storage	Front hot-swap: 8 x 9.5mm E1.S Gen4 NVMe Internal M.2: 4 x M.2 (2280/22110), PCIe Gen5 x4 8 x M.2 (2280), SATA		



Learn more at: <https://www.gigabyte.com/Enterprise>
* All specifications are subject to change without notice. Please visit our website for the latest information.
* All trademarks and logos are the properties of their respective holders.
© 2026 Giga Computing Technology Co., Ltd. All rights reserved.
Last updated: Jan 27, 2026

Designed by

